



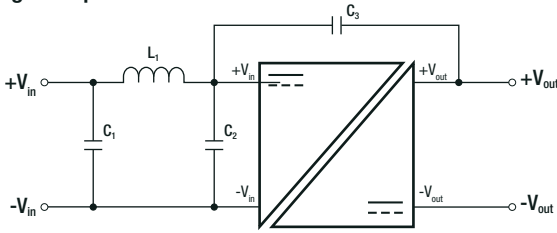




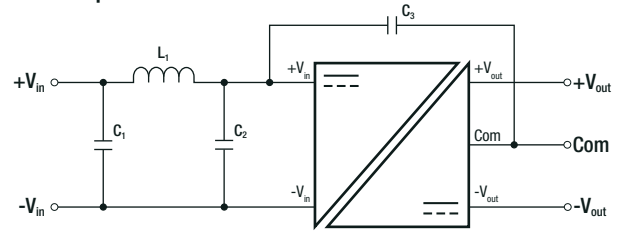


**Specifications** (measured at Ta= 25°C, nominal input voltage, full load)

**EMC Filtering Suggestion according to EN55032 Class A and Class B**  
Single Output



Dual Output



**Component List Class A**

C1	L1	C3
10µF 100V MLCC	3.9µH choke WE 744 045 0039	470pF

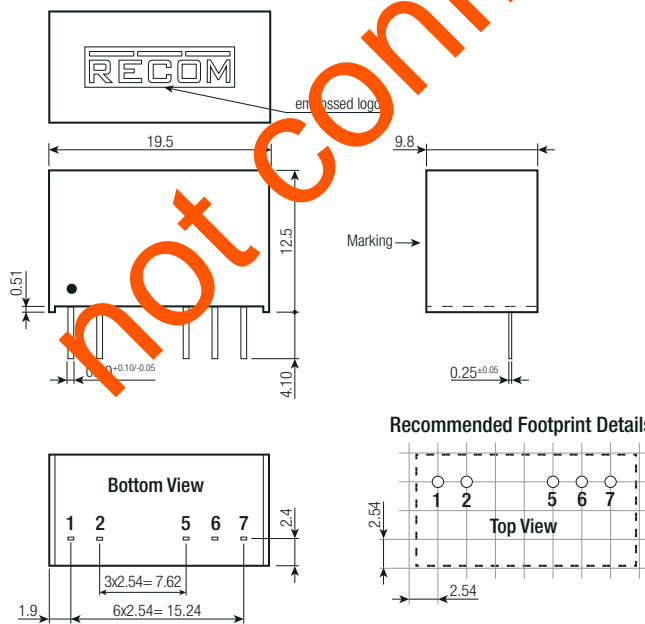
**Component List Class B**

C1	C2	L1	C3
10µF 100V MLCC	2.2µF 100V MLCC	12µH choke WE 744 045 120	470pF

**DIMENSION AND PHYSICAL CHARACTERISTICS**

Parameter	Type	Value
Material	case	non-conductive black plastic, (UL94 V-0)
	potting	silicon rubber compound, (UL94 V-0)
	PCB	FR4, (UL94 V-0)
Dimension (LxWxH)		19.5 x 9.8 x 12.5mm
Weight		4.3g typ.

**Dimension Drawing (mm)**



**Pin Connection**

Pin #	Single	Dual	/X2
1	+Vin	+Vin	+Vin
2	-Vin	-Vin	-Vin
5	-Vout	-Vout	No Pin
6	No Pin	Com	-Vout
7	+Vout	+Vout	+Vout

Tolerance: xx.x= ±0.5mm  
xx.xx= ±0.25mm

**PACKAGING INFORMATION**

Parameter	Type	Value
Packaging Dimension (LxWxH)	tube	520.0 x 22.3 x 12.0mm
Packaging Quantity	tube	25pcs
Storage Temperature Range		- 55°C to +125°C
Storage Humidity		95% RH max.

The product information and specifications may be subject to changes even without prior written notice. The product has been designed for various applications; its suitability lies in the responsibility of each customer. The products are not authorized for use in safety-critical applications without RECOM's explicit written consent. A safety-critical application is an application where a failure may reasonably be expected to endanger or cause loss of life, inflict bodily harm or damage property. The applicant shall indemnify and hold harmless RECOM, its affiliated companies and its representatives against any damage claims in connection with the unauthorized use of RECOM products in such safety-critical applications.